



Redmayne Arnold & Harris  
estate agents, letting agents & surveyors

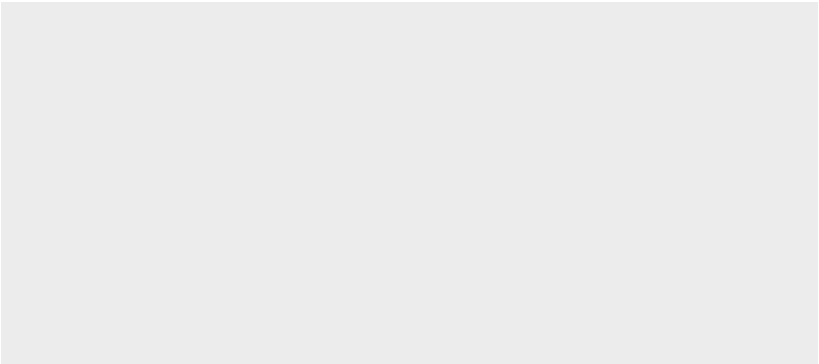
[rah.co.uk](http://rah.co.uk)



45 Blackthorn Close, Cambridge, CB4 1FZ

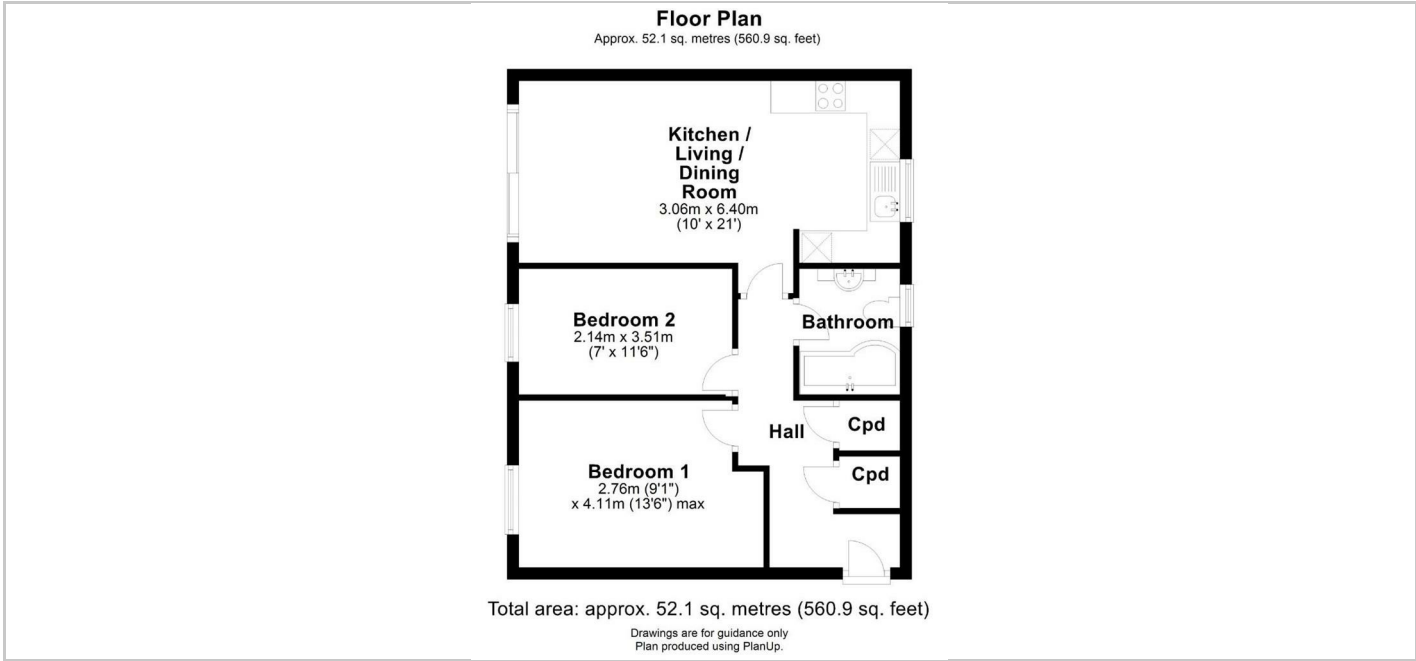
£1,300 PCM





THE PROPERTY

Two bedroom flat located just off Milton Road, well placed for access to the Science/Business Parks, A14 and City Centre. The property has an open plan kitchen/living area, two bedrooms and a bathroom with shower over the bath. The property is let part-furnished and benefits from one off-street parking space. Managed by RAH. EPC Rating C. Council tax band C. Minimum 6 month tenancy. Deposit £1500.



Directions

SITUATION

